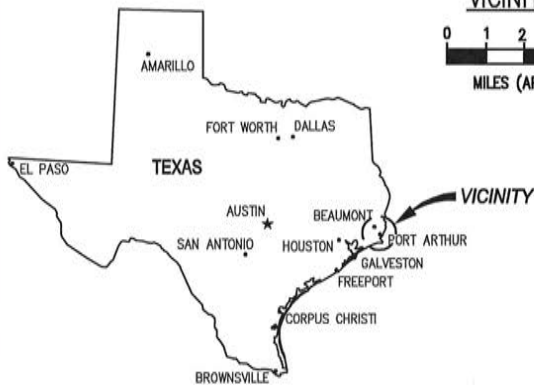
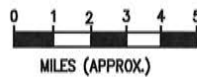


VICINITY MAP



30.060177° N
 94.037499° W

AREA MAP



LANIER & ASSOCIATES
 CONSULTING ENGINEERS
 INCORPORATED
 FIRM F-2981
 NEW ORLEANS, LA · BEAUMONT, TX

MARTIN OPERATING PARTNERSHIP, L.P.
 BEAUMONT TEXAS

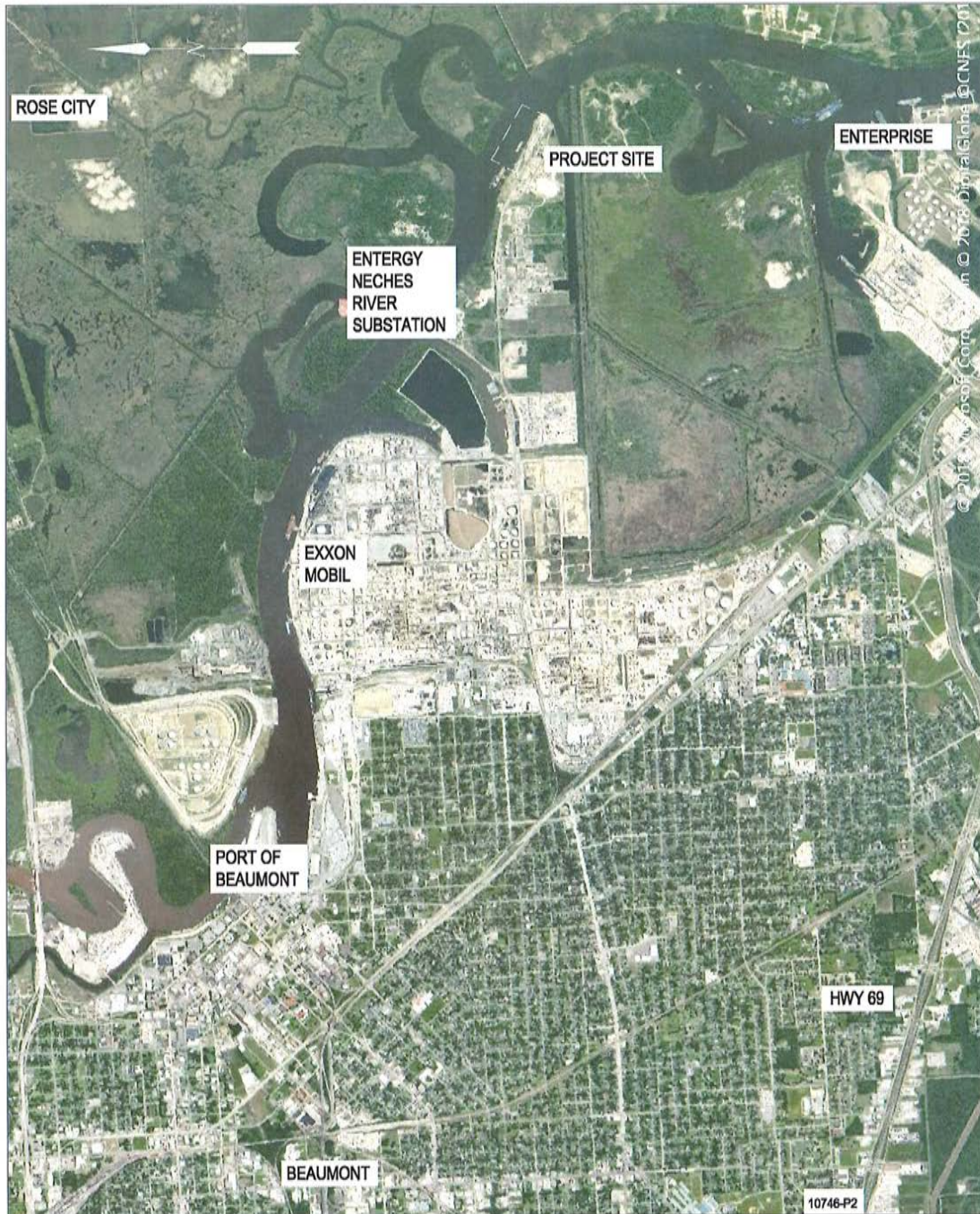
**USACE REGULATORY PERMIT REQUEST
 PROPOSED NEW SHIP DOCK
 VICINITY MAP**


10746-P1

DATE APRIL '19
 DESIGN JES
 DRAWN ADG
 CHECK DLC
 CONTRACT 10746
 SHEET No.

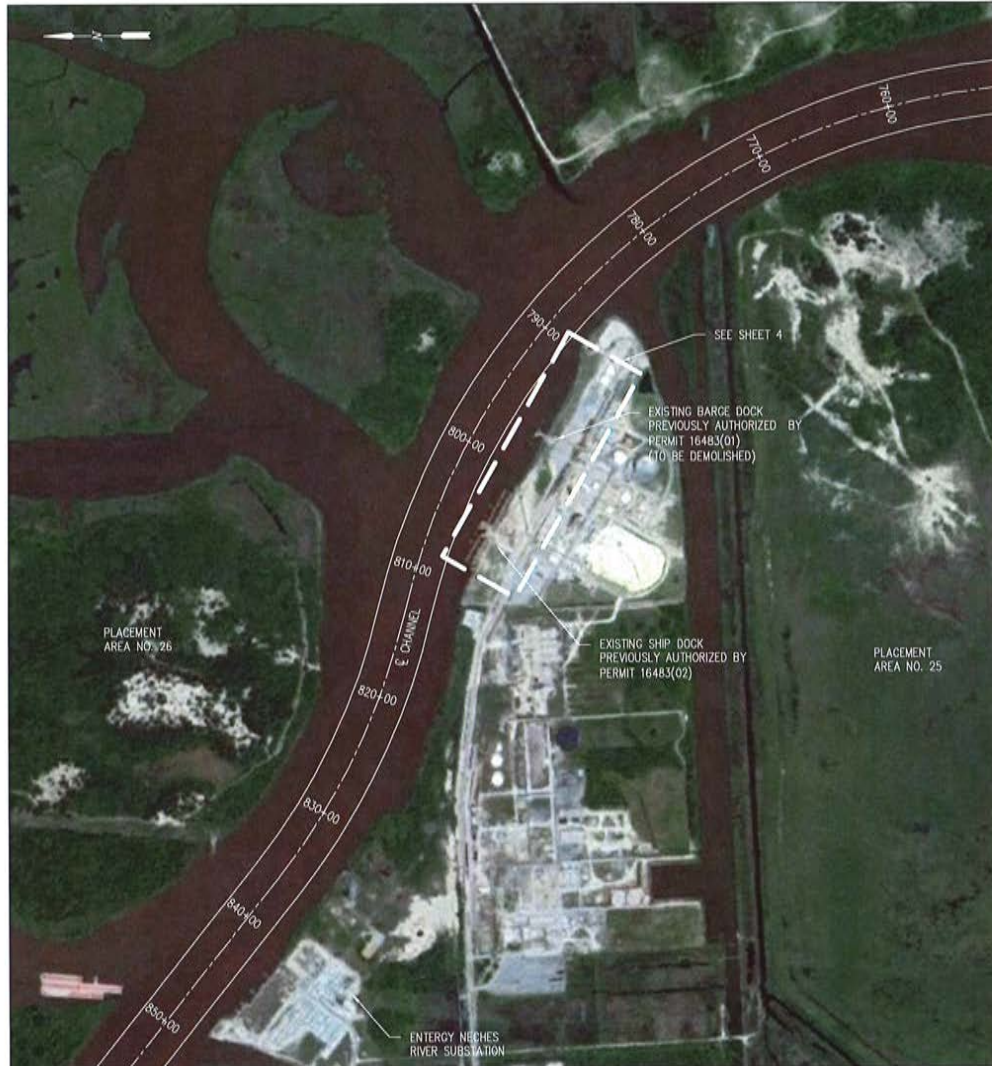
1 OF 13

APR 16 2019



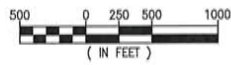
 LANIER & ASSOCIATES CONSULTING ENGINEERS INCORPORATED FIRM F-2981 NEW ORLEANS, LA BEAUMONT, TX	MARTIN OPERATING PARTNERSHIP, L.P. BEAUMONT TEXAS	DATE APRIL '19 DESIGN JES DRAWN ADG CHECK DLC CONTRACT 10746 SHEET No.
	USACE REGULATORY PERMIT REQUEST PROPOSED NEW SHIP DOCK LOCATION MAP	10746-P2

APR 16 2019



EXISTING SITE PLAN

SCALE: 1" = 1000'



31.39287778° N
 94.037499° W

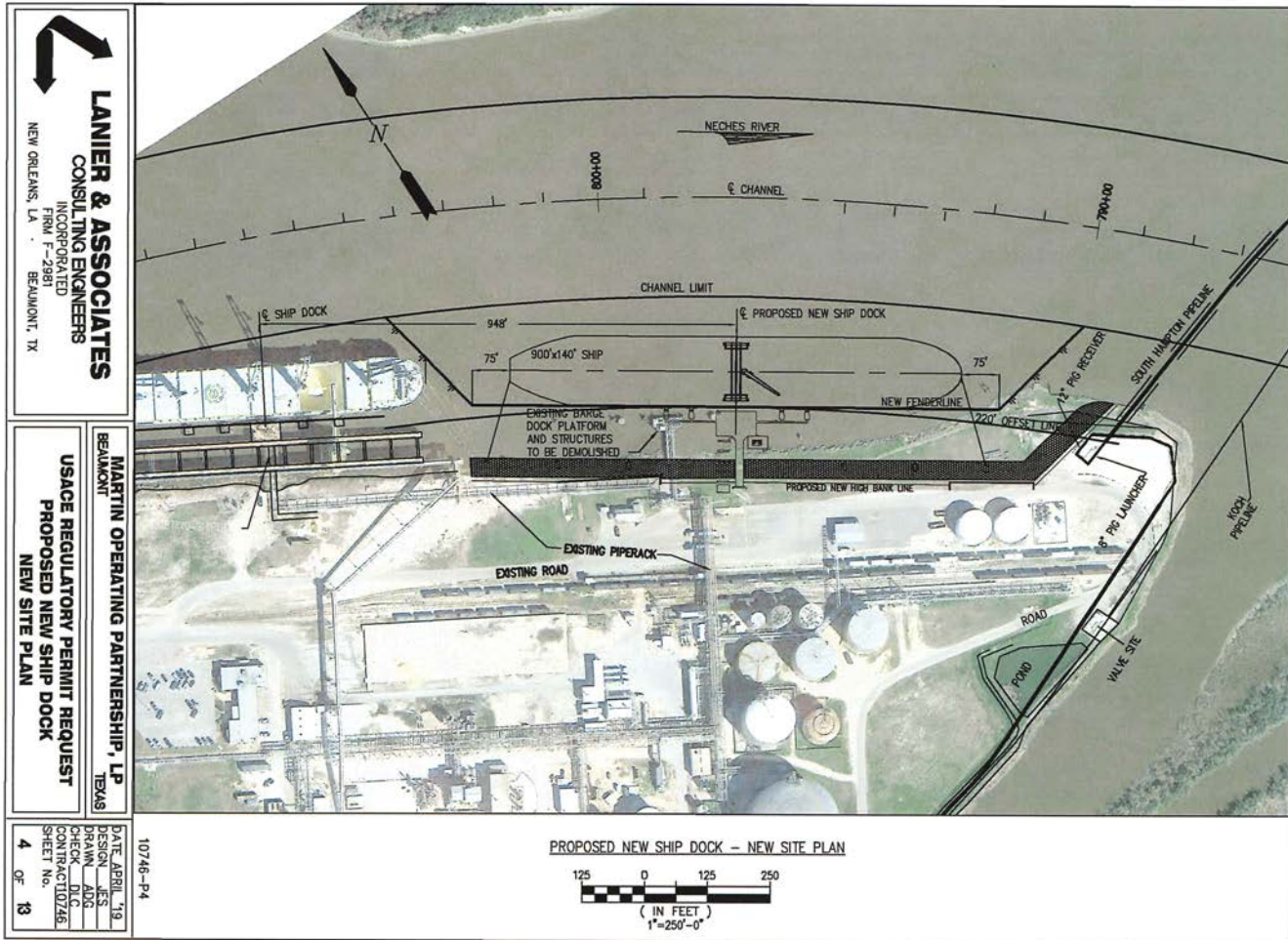
10746-P3

LANIER & ASSOCIATES
 CONSULTING ENGINEERS
 INCORPORATED
 FIRM F-2981
 NEW ORLEANS, LA · BEAUMONT, TX

MARTIN OPERATING PARTNERSHIP, L.P.
 BEAUMONT TEXAS

**USACE REGULATORY PERMIT REQUEST
 PROPOSED NEW SHIP DOCK
 EXISTING SITE PLAN**

DATE APRIL '19
 DESIGN JES
 DRAWN ADG
 CHECK DLC
 CONTRACT 10746
 SHEET No.
3 OF 13



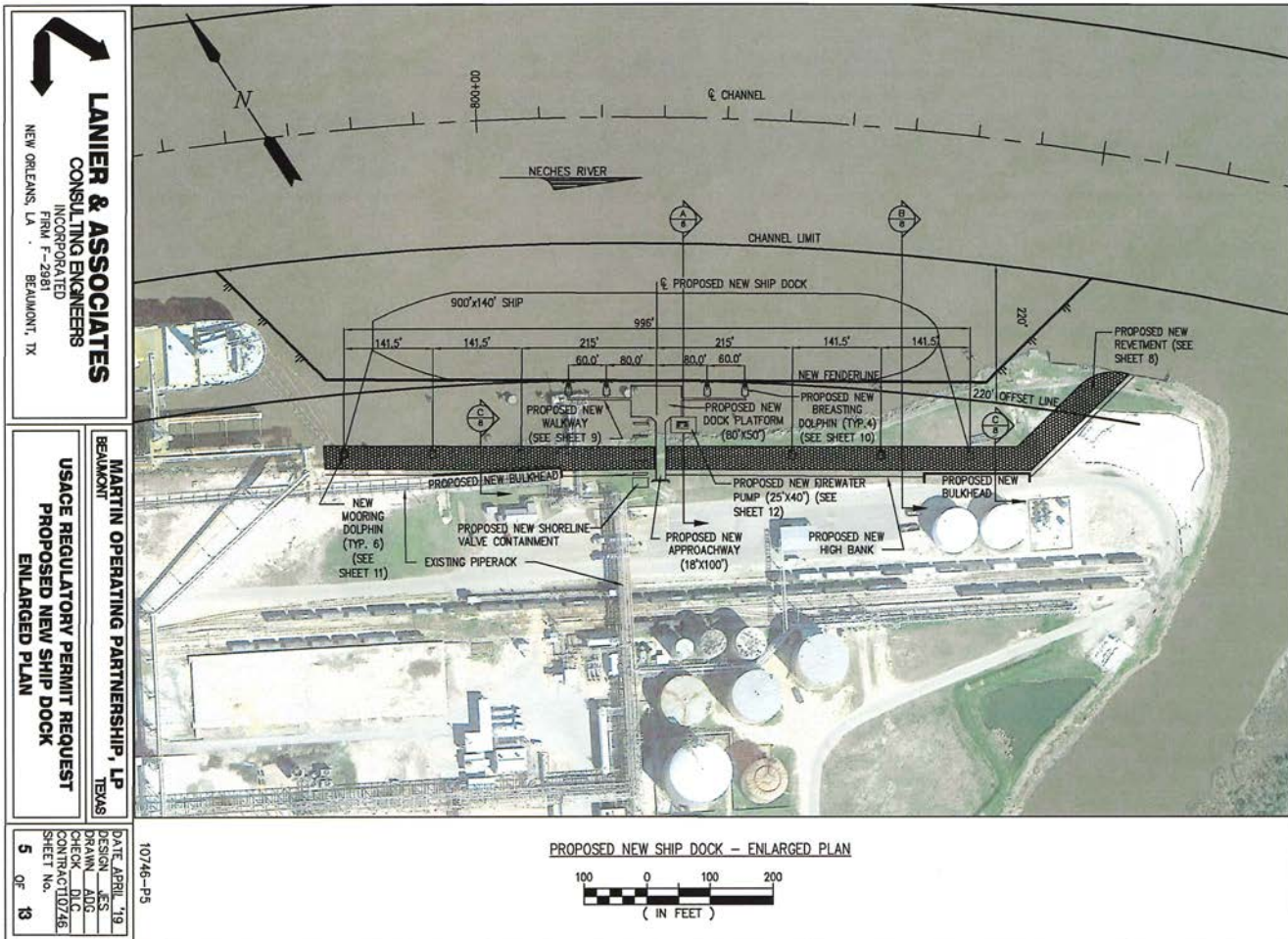
LANIER & ASSOCIATES
 CONSULTING ENGINEERS
 INCORPORATED
 FIRM F-2981
 NEW ORLEANS, LA BEAUMONT, TX

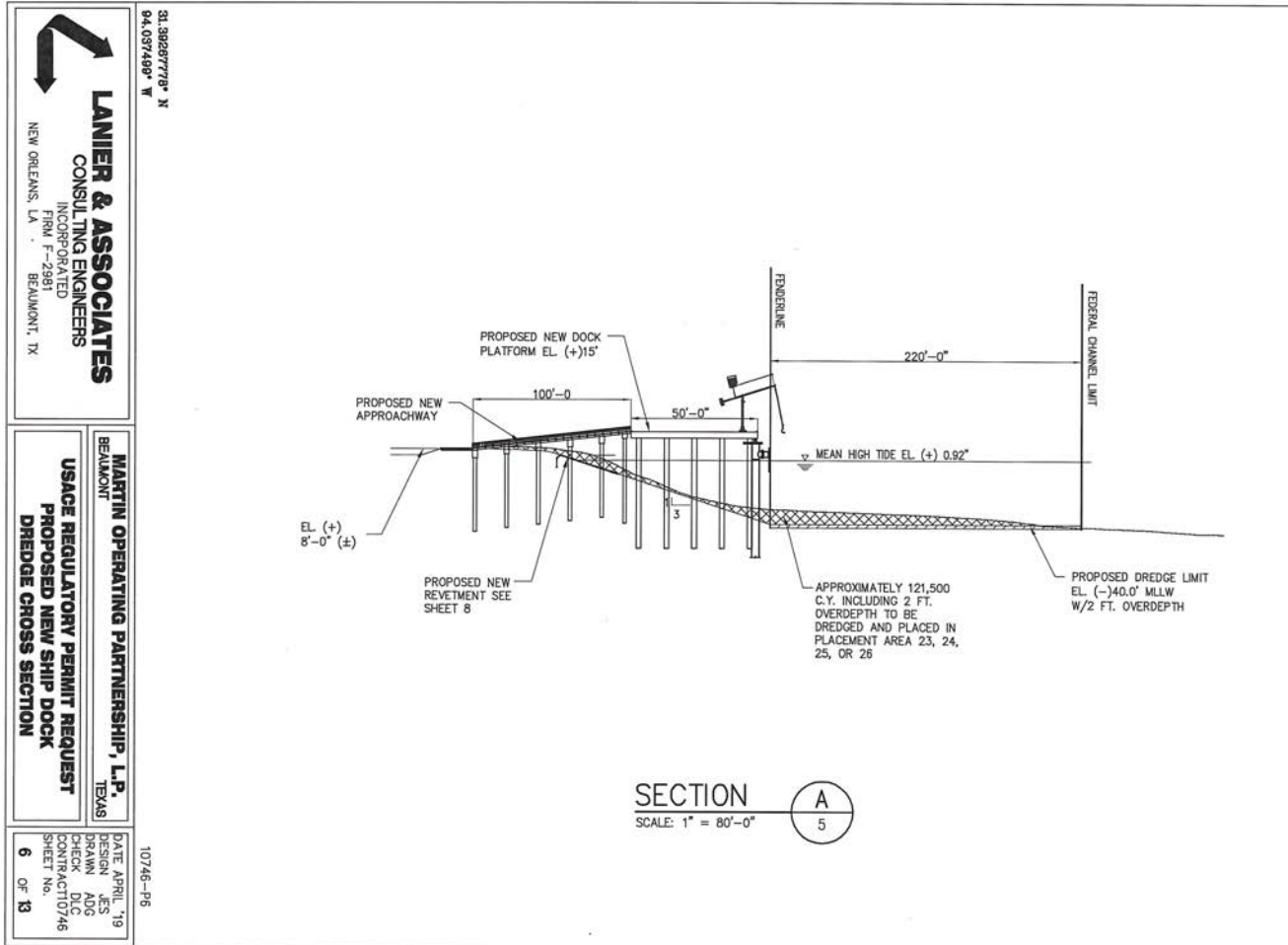
MARTIN OPERATING PARTNERSHIP, LP
 TEXAS
 USACE REGULATORY PERMIT REQUEST
 PROPOSED NEW SHIP DOCK
 NEW SITE PLAN

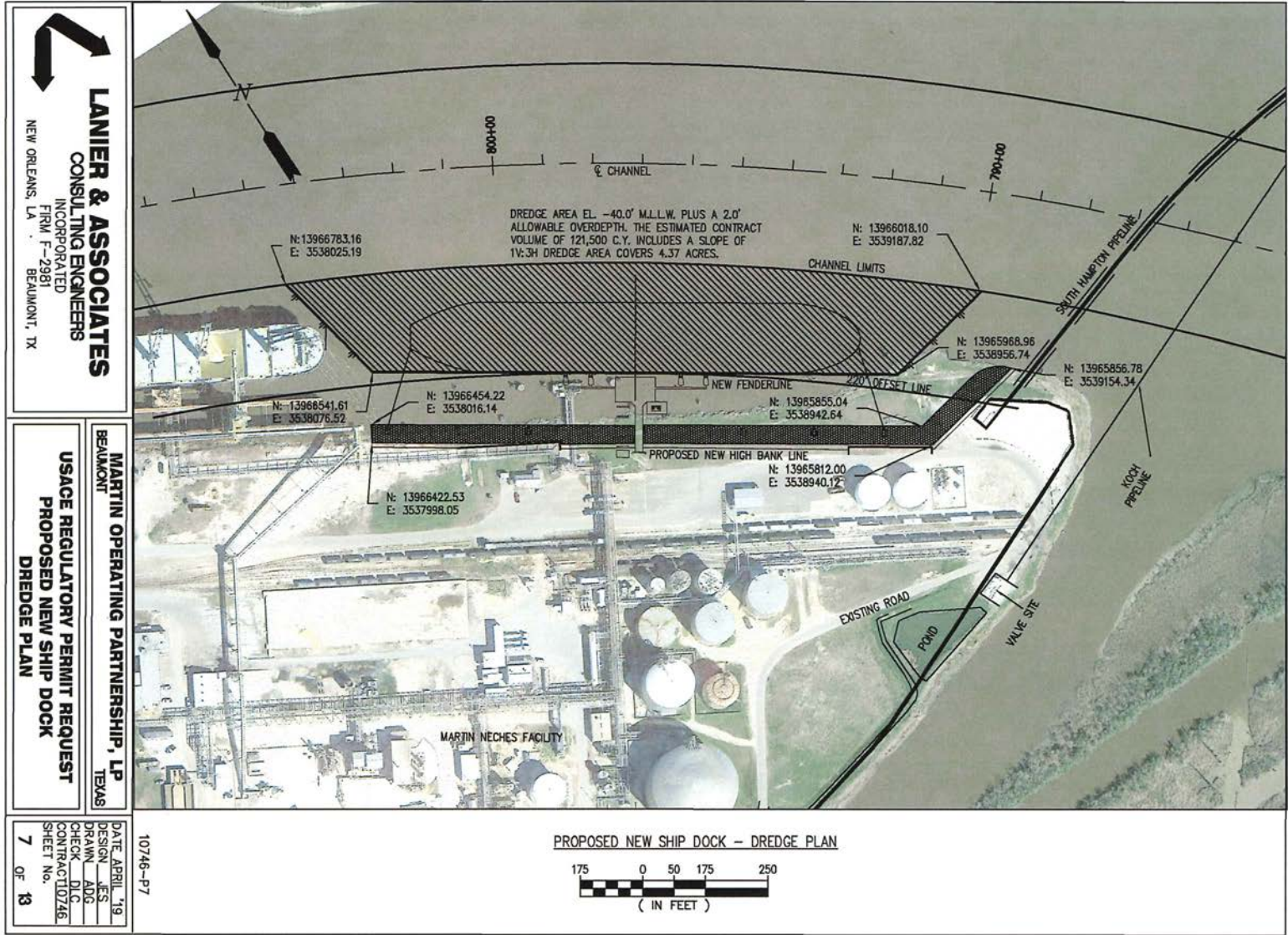
DATE: APRIL '19
 DESIGN: JES
 DRAWN: ADG
 CONTRACT: 10746
 SHEET NO. 4 OF 13

10746-P4

APR 16 2019







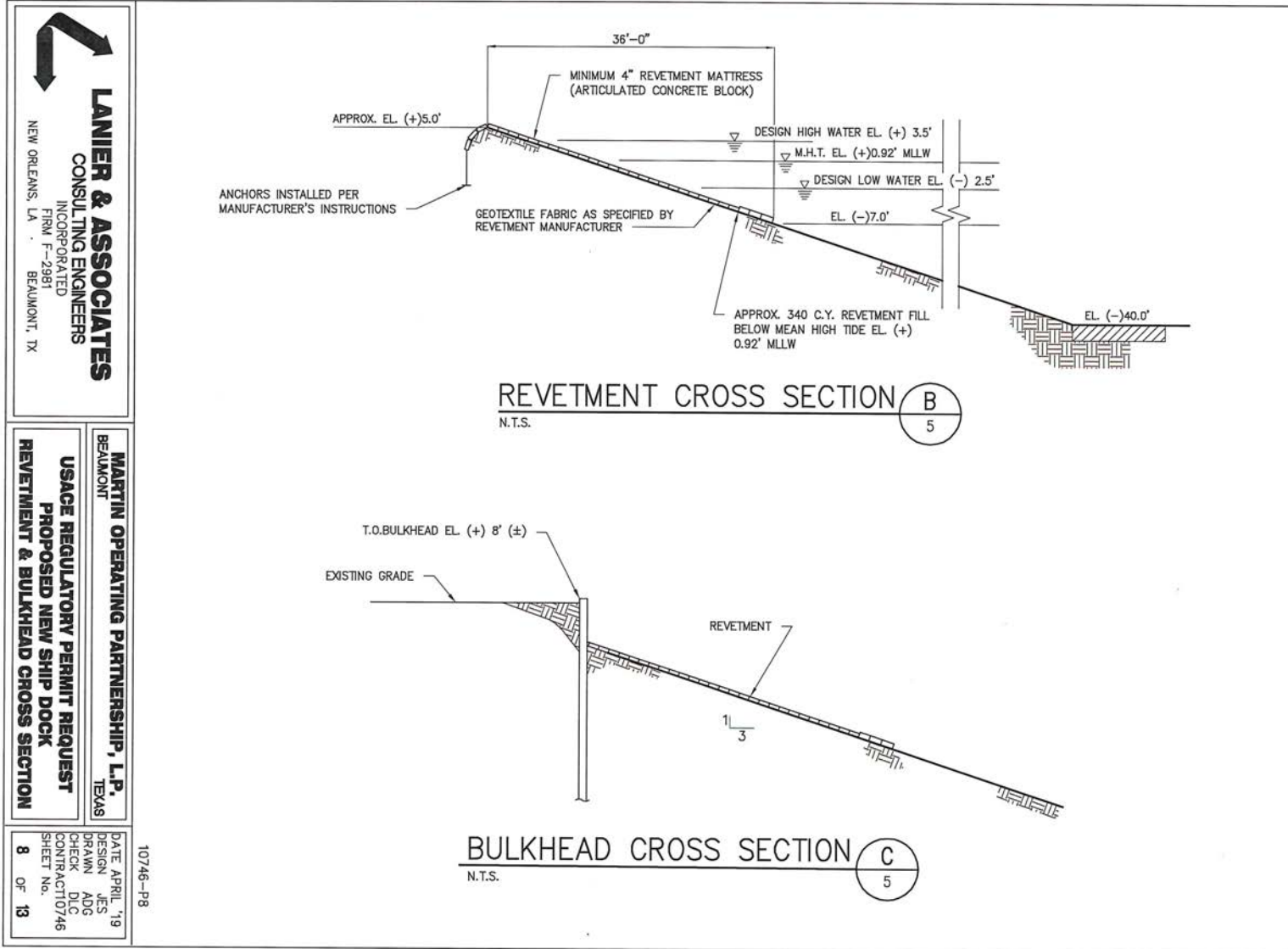
APR 16 2019

LANIER & ASSOCIATES
 CONSULTING ENGINEERS
 INCORPORATED
 FIRM F-2981
 BEAUMONT, TX
 NEW ORLEANS, LA

MARTIN OPERATING PARTNERSHIP, LP
 BEAUMONT, TEXAS
 USAGE REGULATORY PERMIT REQUEST
 PROPOSED NEW SHIP DOCK
 DREDGE PLAN

DATE: APRIL 19
 DESIGN: AES
 DRAWN: ADG
 CHECK: DLG
 CONTRACT: 10746
 SHEET No. 7 OF 13

10746-P7



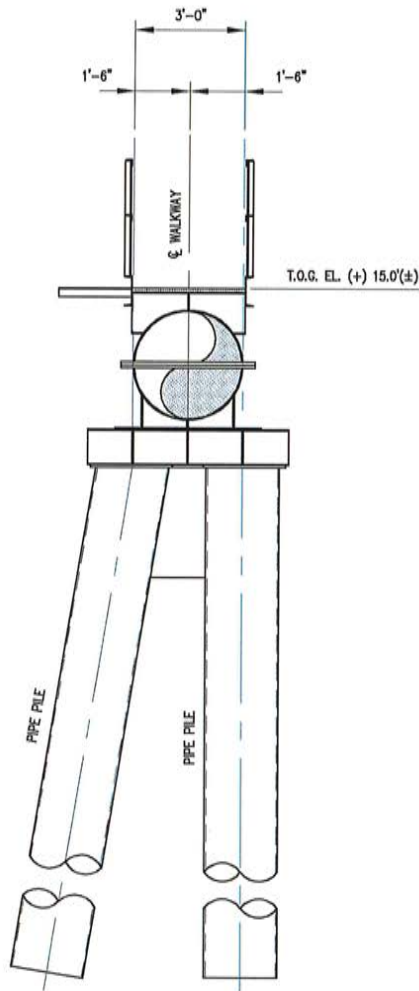
LANIER & ASSOCIATES
 CONSULTING ENGINEERS
 INCORPORATED
 FIRM F-298T
 NEW ORLEANS, LA BEAUMONT, TX

MARTIN OPERATING PARTNERSHIP, L.P.
 BEAUMONT, TEXAS
USACE REGULATORY PERMIT REQUEST
PROPOSED NEW SHIP DOCK
REVETMENT & BULKHEAD CROSS SECTION

DATE APRIL '19
 DESIGN JES
 DRAWN ADG
 CHECK DLC
 CONTRACT 10746
 SHEET NO. 8
 OF 13

10746-P8

APR 16 2019



TYPICAL WALKWAY SUPPORT

SCALE: NTS

10746-P9



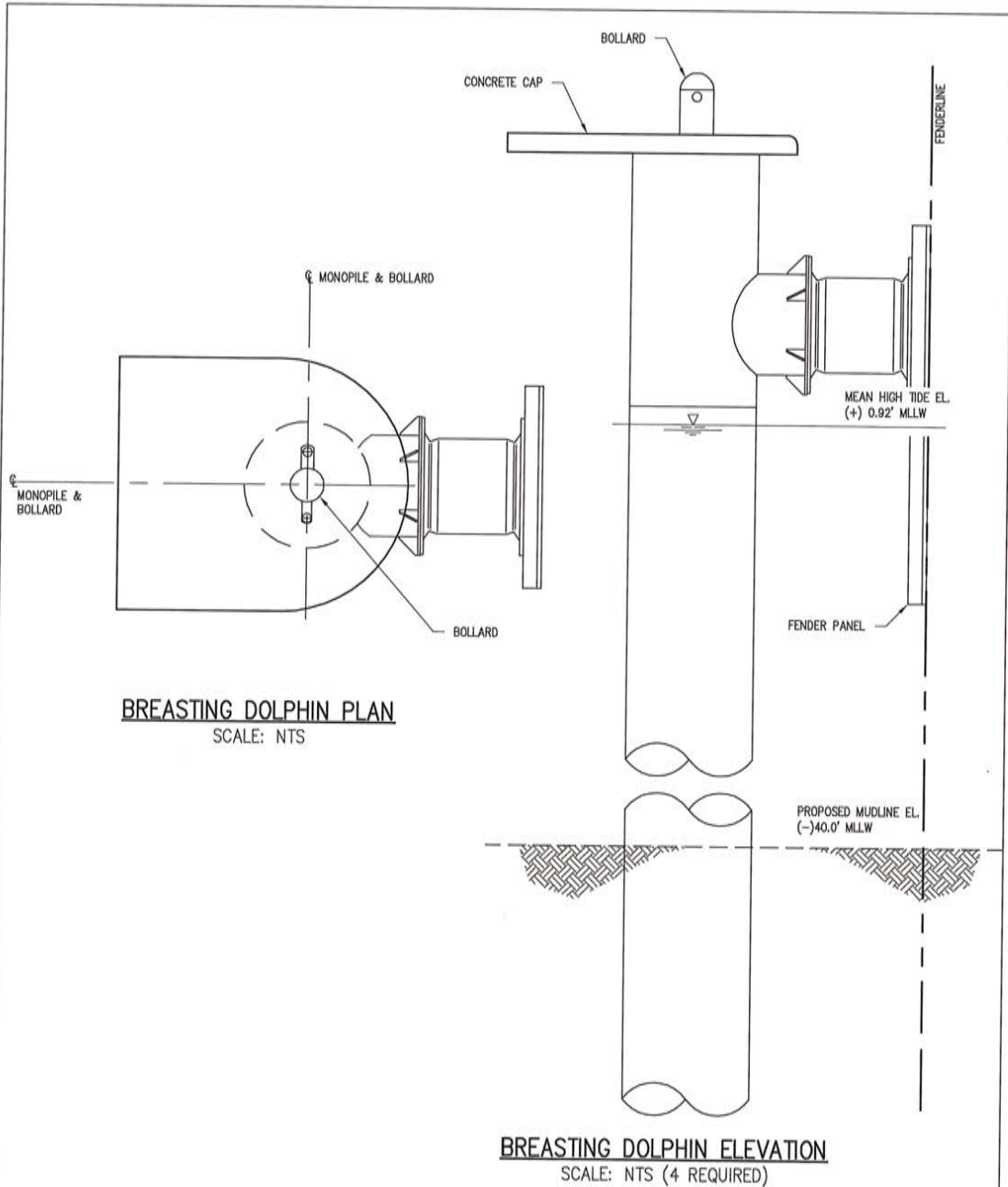
LANIER & ASSOCIATES
CONSULTING ENGINEERS
INCORPORATED
FIRM F-2981
NEW ORLEANS, LA · BEAUMONT, TX

MARTIN OPERATING PARTNERSHIP, LP
BEAUMONT TEXAS

**USACE REGULATORY PERMIT REQUEST
PROPOSED NEW SHIP DOCK
TYPICAL WALKWAY SUPPORT**

DATE APRIL '19
DESIGN JES
DRAWN ADG
CHECK DLC
CONTRACT 10746
SHEET No.

9 OF 13



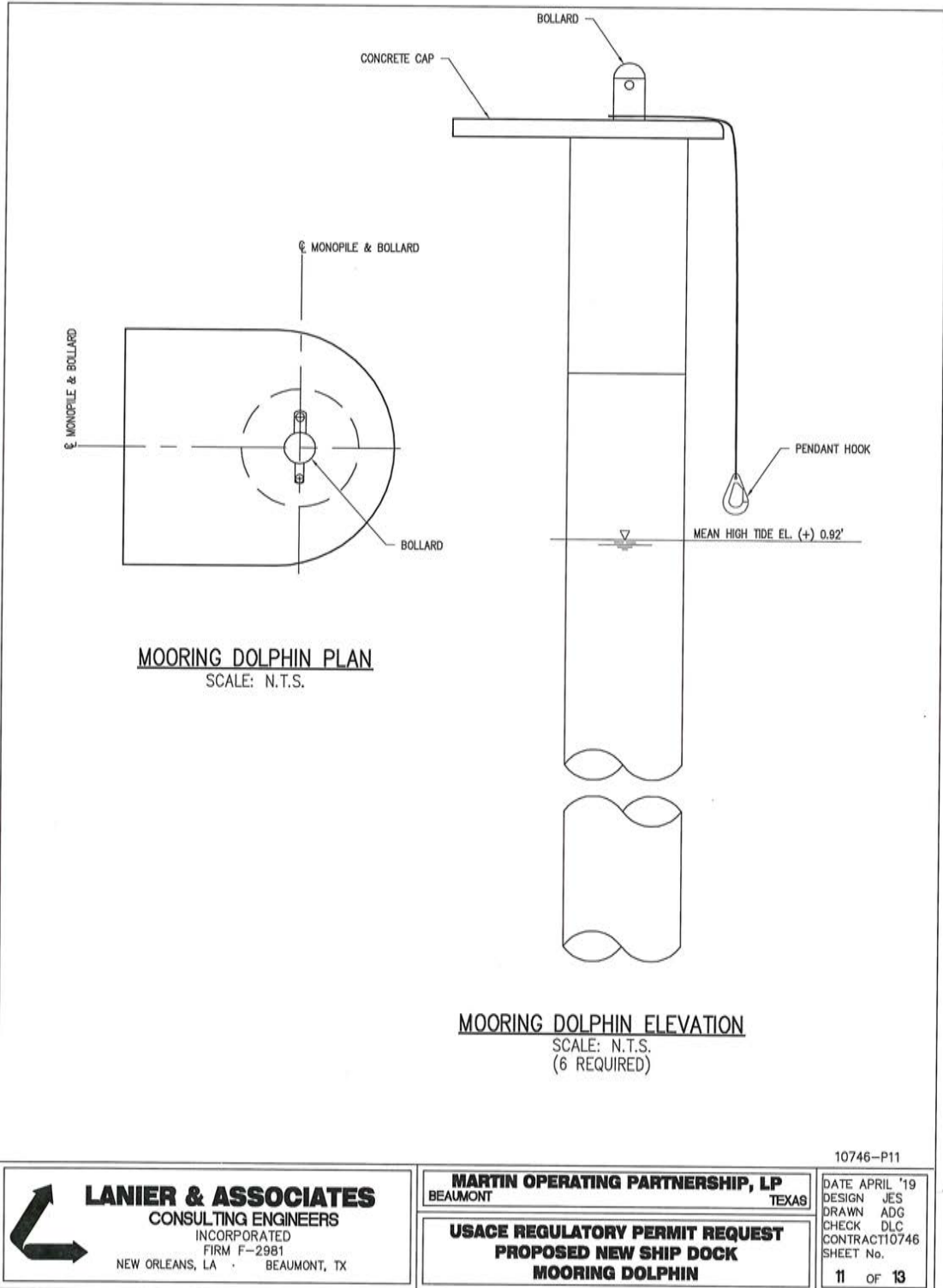
LANIER & ASSOCIATES
 CONSULTING ENGINEERS
 INCORPORATED
 FIRM F-2981
 NEW ORLEANS, LA · BEAUMONT, TX

MARTIN OPERATING PARTNERSHIP, LP
 BEAUMONT TEXAS

USACE REGULATORY PERMIT REQUEST
PROPOSED NEW SHIP DOCK
BREASTING DOLPHIN

10746-P10

DATE APRIL '19
 DESIGN JES
 DRAWN ADG
 CHECK DLC
 CONTRACT 10746
 SHEET No.
10 OF 13

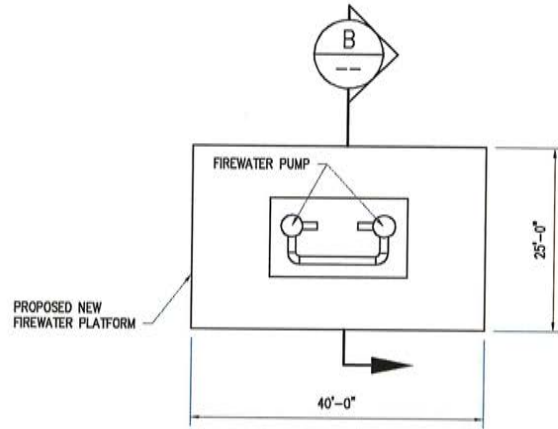


LANIER & ASSOCIATES
 CONSULTING ENGINEERS
 INCORPORATED
 FIRM F-2981
 NEW ORLEANS, LA · BEAUMONT, TX

MARTIN OPERATING PARTNERSHIP, LP
 BEAUMONT TEXAS

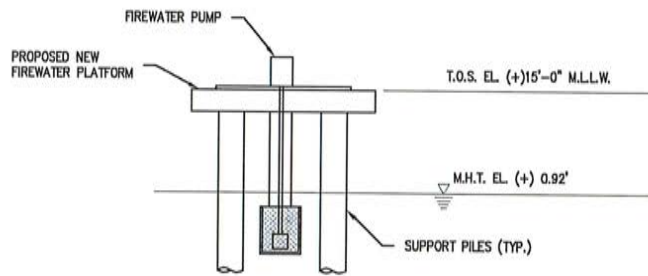
USACE REGULATORY PERMIT REQUEST
PROPOSED NEW SHIP DOCK
MOORING DOLPHIN

10746-P11
 DATE APRIL '19
 DESIGN JES
 DRAWN ADG
 CHECK DLC
 CONTRACT 10746
 SHEET No.
11 OF 13



FIREWATER PUMP PLATFORM

SCALE: 1" = 20'-0"



SECTION

SCALE: 1" = 20'-0"



10746-P12



LANIER & ASSOCIATES
 CONSULTING ENGINEERS
 INCORPORATED
 FIRM F-2981
 NEW ORLEANS, LA · BEAUMONT, TX

MARTIN OPERATING PARTNERSHIP, LP
 BEAUMONT TEXAS

USACE REGULATORY PERMIT REQUEST
PROPOSED NEW SHIP DOCK
FIREWATER PUMP PLATFORM

DATE APRIL '19
 DESIGN JES
 DRAWN ADG
 CHECK DLC
 CONTRACT 10746
 SHEET No.

12 OF 13

